

Ecoline

Application

VANGUARD Ecoline Aluminium Blinds are external venetian blinds which can be opened or closed and raised or lowered. These technically advanced blinds are made of a highly elastic special aluminium alloy. They are most suited to glass facades, windows and buildings with modern architectural elements with a particular need for sun protection (degree of blackout >90%).

Benefits

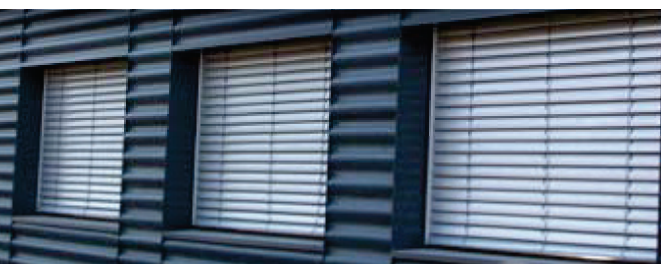
- Heat protection due to the reflection of sun before it reaches the glass
- Energy saving- reduces air conditioning costs
- Provides privacy and allows control of incoming light into a room
- Architectural design which adds a modern element to the facade of a building.

Installation

Depending on requirements, the blinds can be installed outside of the window or door frame, in a recess or shaft that has been specially created at the beginning of construction, or within an existing window recess.

ALUMINIUM BLINDS

ECOLINE BLIND AR 080

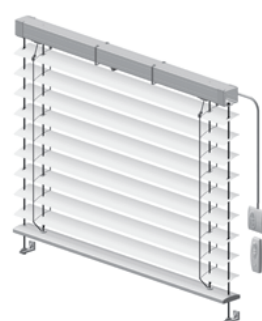


Model Ecoline Blind AR 080

- Rolled aluminium louvre
- Louvre width 80mm
- Louvre thickness 0.44mm
- Two sided beading



ECOLINE BLIND AF 80/100

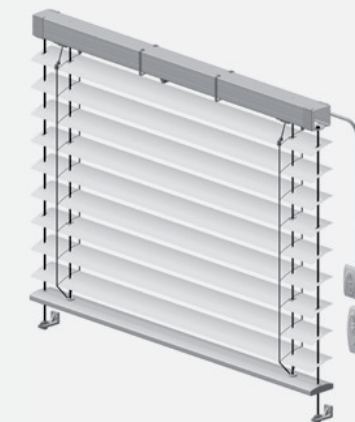


Model Ecoline Blind AF 80

- Flat aluminium louvre
- Louvre width 80mm
- Louvre thickness 0.44mm
- No beading on sides



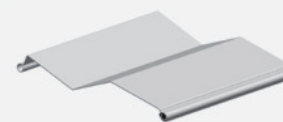
ECOLINE BLIND AR 92S | AR 92Z



Individual Parts



S-Shaped



Z-Shaped

The aluminium louvre is beaded on both sides and made from a highly elastic alloy. The louvres are fitted with guide lugs alternately on both sides; the punched holes are beaded and protect the pull cords from wearing through. The front beading has a sealing profile fitted for improved dimming and sound insulation. The extruded aluminium profile stay bracket is guided through the rails by plastic lugs on both sides.

- Louvre width 92 mm
- Louvre thickness 0.44 mm
- Beaded on both sides
- Guide lugs in the lateral guides

Individual Parts



Top Rail

Made of extruded aluminium. Dimensions 59 x 59.5mm. Installation with closed side facing upwards.



Omega Punching

Special punching to fix every louvre to the ladder cord.

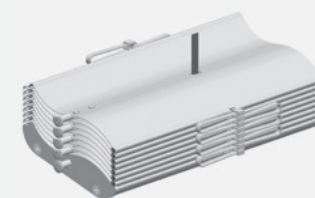


Slat Clip

The slats are kept evenly apart using a ladder cord. For Ecoline blind AF 80 and AF 100, every 4th slat is equipped with plastic slat clips. Every slat can be equipped with a slat clip for a small surcharge.

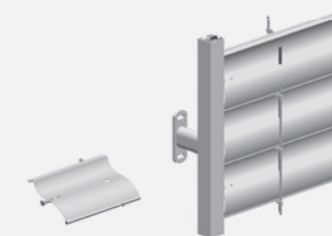
Optimum stacking by means of conical cams with chrome steel hooks

Advantages: perfect closure of the blind, precise folding of carrier band, minimum stacking height, minimum elongation, precise separation of louvre.



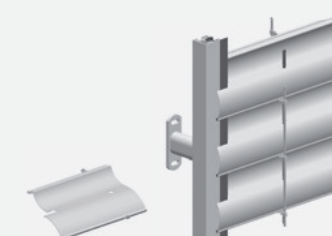
Louvre guided with lugs

Guide lugs are arranged alternately on both sides, so levering the slats out of the side guide rails is not possible.



Louvre guided without lugs

Louvre punched and beaded, guided both sides. For better blackout.



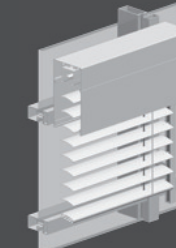
TYPES OF INSTALLATION

Motorisation



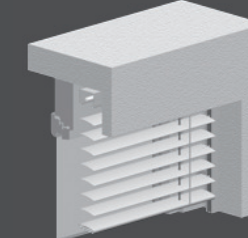
- Automatic wind and sun sensors
- Radio control
- Central control

Facade Boxes



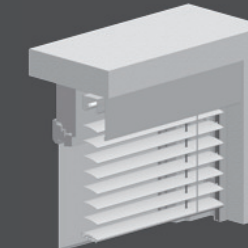
UK 140 | FK 140 | FK 195

VANGUARD Ecoline Aluminium Blind is fixed into the protruding extruded square box. Height 259 mm, 323 mm or 385 mm.



Recess Installation

VANGUARD Ecoline Aluminium Blind without protection cover, can easily be installed into the recess.



Protection Cover Installation

VANGUARD Ecoline Aluminium Blind is fixed into the recess with a screwless protective cover.